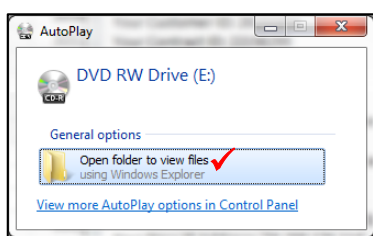


Quick Reference Guide:

Installing the Stalker Traffic Statistics App and retrieving data from the Stalker Traffic Statistics Sensor.

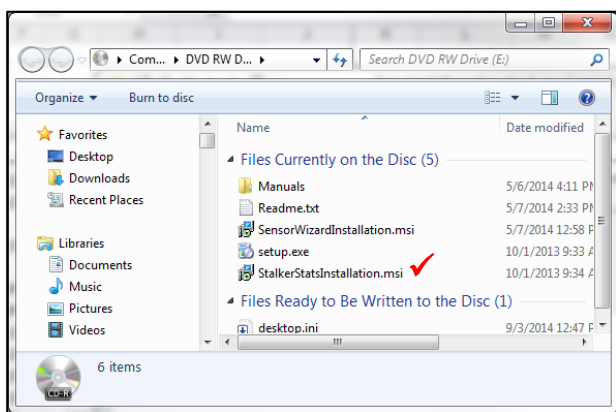
Installing Stalker Traffic Statistics App on your computer.

1. Locate the Stalker Traffic Statistics App installation CD and insert it into your computer's CD/DVD drive.



When the AutoPlay dialog box appears, click *Open folder to view files*.

2. Install Traffic Statistics App by double clicking *StalkerStatsInstallation.msi*.



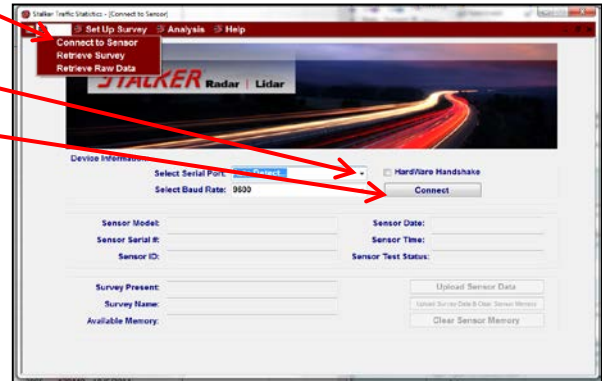
3. Follow the prompts to complete installation. When complete, a shortcut will be created on your desktop named "Shortcut to Stalker Traffic Statistics."



4. When installation of the Traffic Statistic App is finished, return to the window that contains the files on the CD/DVD.
5. Double-click on CDM 2.04.16.exe. This will install important files on your computer.
6. When this step is complete, you may close all windows and remove the CD/DVD.

Connecting to the Stalker Traffic Statistics Sensor.

1. Connect USB cable to your computer and sign or sensor.
2. Double click *Shortcut to Stalker Traffic Statistics*.
3. At the menu bar click *File*, then click *Connect to Sensor*.
4. At Device Information screen, set the *Select Serial Port* dropdown to *Auto Detect...*,
5. Then click the *Connect* button.
6. Stalker Traffic Statistics App should auto-detect the Stalker Traffic Statistics Sensor and auto-populate the Device Information screen.

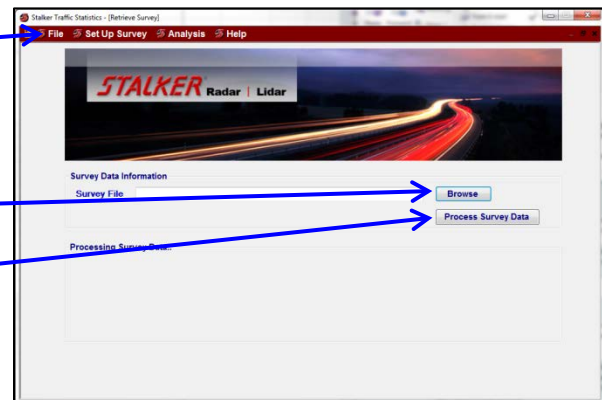


Retrieving Statistics Data.

1. While still on the Device Information screen, click either the *Upload Sensor Data* button or *Upload Survey Data & Clear Sensor Memory* button.
2. Survey data will be retrieved from the sensor and stored as an XML file on your computer.

Processing Statistics Data.

1. At menu bar, click *File*, then click *Retrieve Survey*.
2. At the Survey Data Information screen, click the *Browse* button and locate the XML file that you want to analyze.
3. Click the *Process Survey Data* button.
4. To view the results, click *Analysis* in the menu bar, then click *Survey Analysis*.



Survey Setup, Analysis, & Reporting

Refer to Stalker Traffic Statistics App user manual, 011-0146-00.